



110 Station Street DOUGLAS PARK, NSW



3



2



3

Location & Views On 3.8 Acres

Don't miss this sensational lifestyle opportunity!

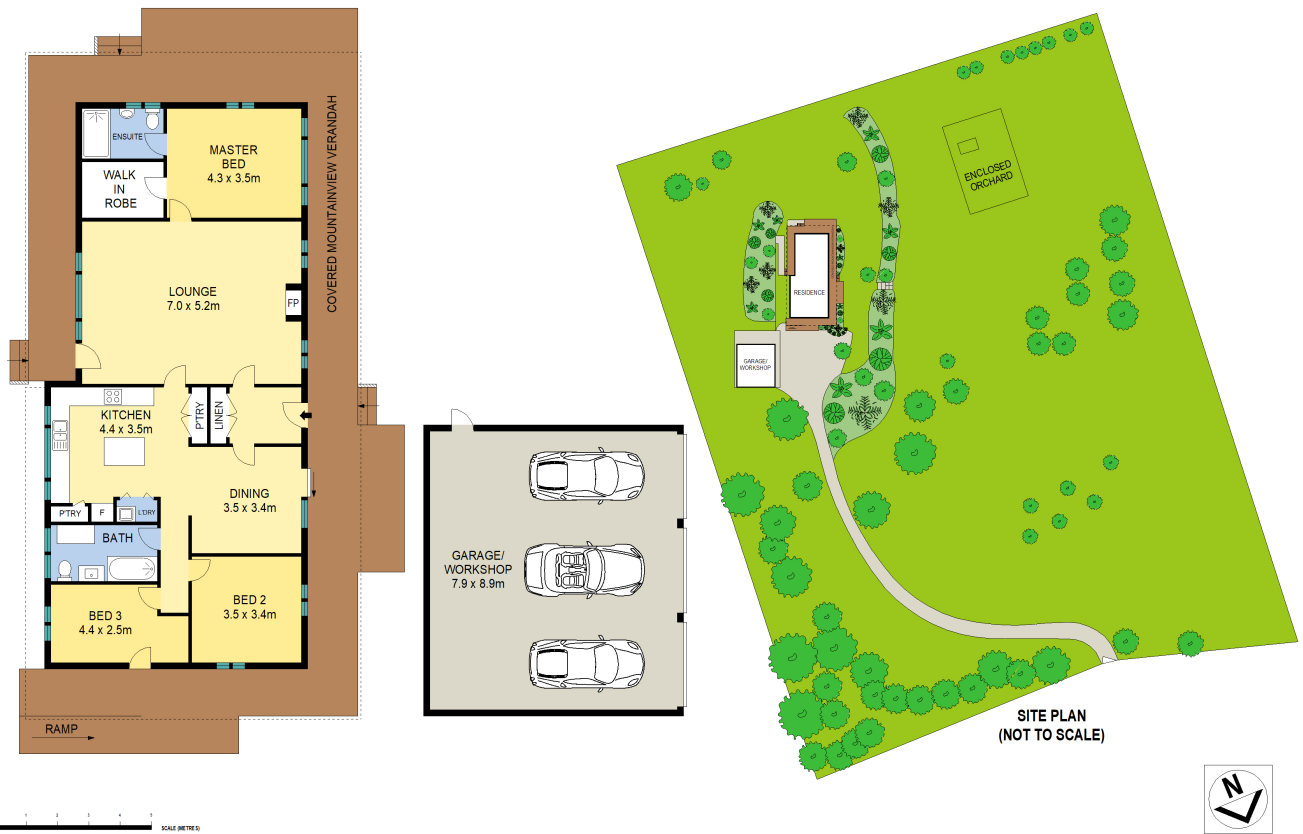
- Renovated 3 bedroom home on 3.8 acres with town water
- Main bedroom with ensuite & large walk-in robe
- Polished floorboards, raked ceilings, open fire place
- Spacious kitchen with plenty of storage, stone bench tops, dishwasher
- Large formal lounge, dining room off the kitchen
- 3 car extra deep shed with power
- 10kW solar panels, split system a/cs, double glazed windows for insulation and year round comfort
- Extensive planting of shrubs attracting plenty of native birds
- Large bird netted veggie garden, orchard & chook run, citrus & fruit trees

INSPECTIONS AFTER 23 NOVEMBER 2021

Douglas Park has fast become one of the premium locations in the Wollondilly Shire. Loved for the relaxed, semi-rural lifestyle on offer and the friendly community based atmosphere, this is one of the major drawcards for the area with its superb access to both Sydney and Wollongong CBD, University and excellent beaches.



Sue Rosella



110 Station Street, Douglas Park



110 Station Street

DOUGLAS PARK, NSW

