



110 Station Street Douglas Park, NSW

 3  2  3

Location & Views on 3.8 Acres

This is a fantastic opportunity to purchase a unique 3.8 acre property that is a very rare find in today's market. If you are looking for privacy and space with outstanding views you will not be disappointed by what is on offer here. The property is perfect for those looking for lifestyle and hobby farm pursuits or for those simply looking to take advantage of the rural setting.

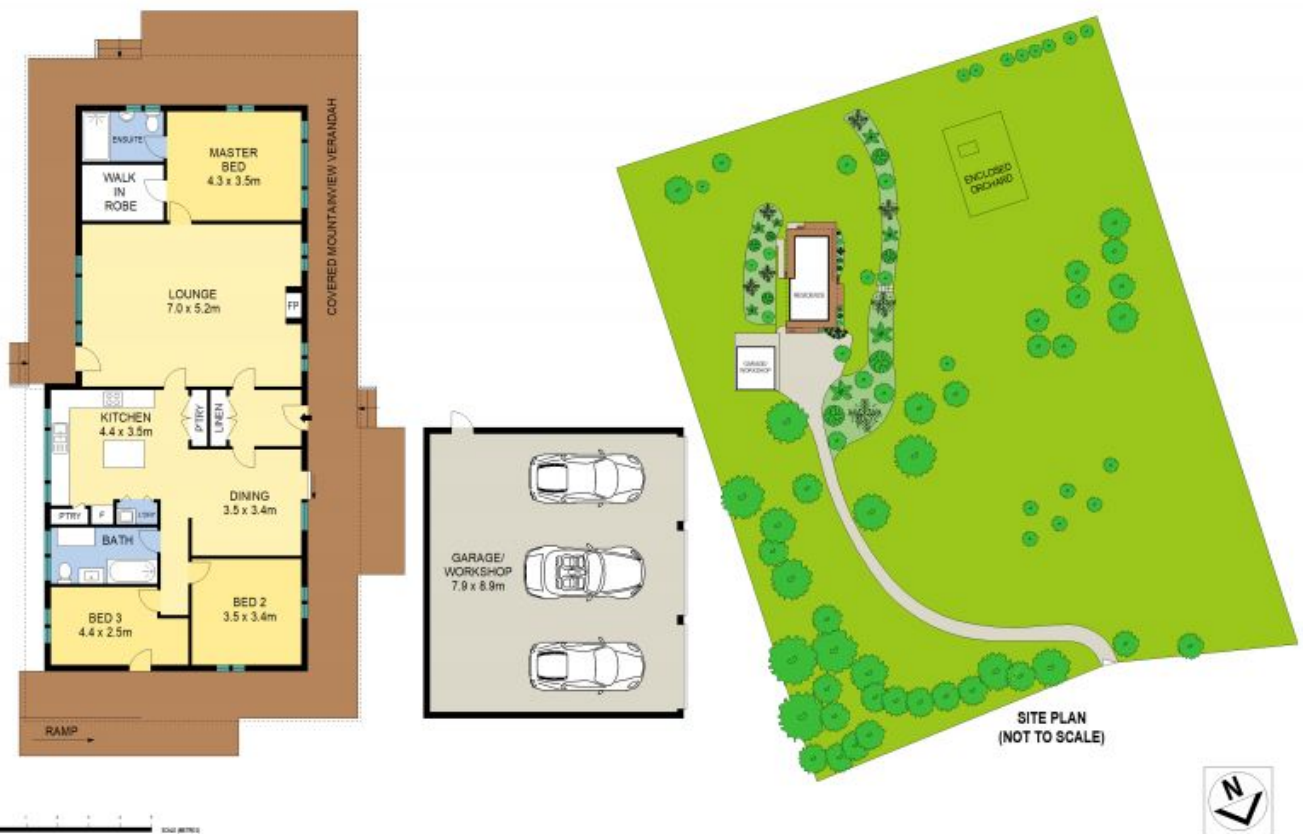
The large 3 bedroom home has undergone recent renovations and is full of character. Set well back off the road, the home has been perfectly positioned to take in the extensive views and the new deck around the home is a great place to watch the sunset at the end of the day.

Dont miss this sensational lifestyle opportunity!

- . Renovated 3 bedroom home on 3.8 acres with town water
- . Main bedroom with ensuite & large walk-in robe
- . Polished floorboards, raked ceilings, open fire place
- . Spacious kitchen with plenty of storage, stone bench tops, dishwasher
- . Large formal lounge, dining room off the kitchen
- . 3 car extra deep shed with power



Trevor Ive



110 Station Street, Douglas Park



110 Station Street

Douglas Park, NSW

