



40 Picton Avenue Picton, NSW



3



1



2

Quintessential Historic Cottage With Glorious Views

We are extremely proud to list this enchanting late Victorian Cottage C.1897. Perfectly positioned on a huge block with magnificent views. Don't miss the video !!

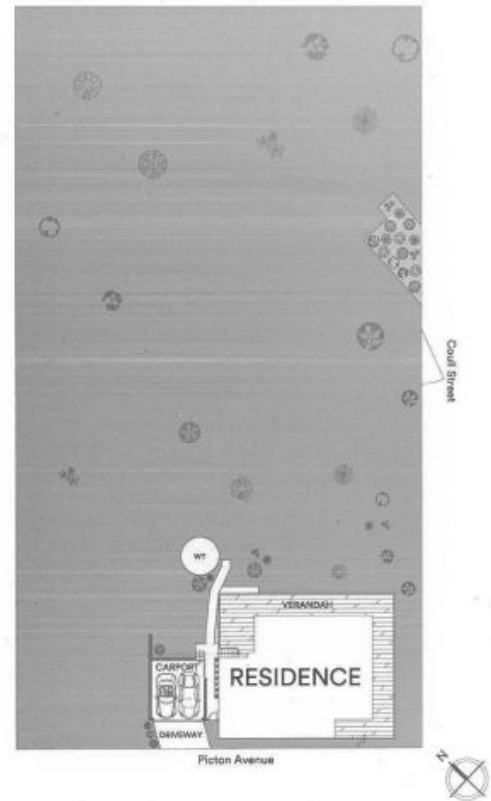
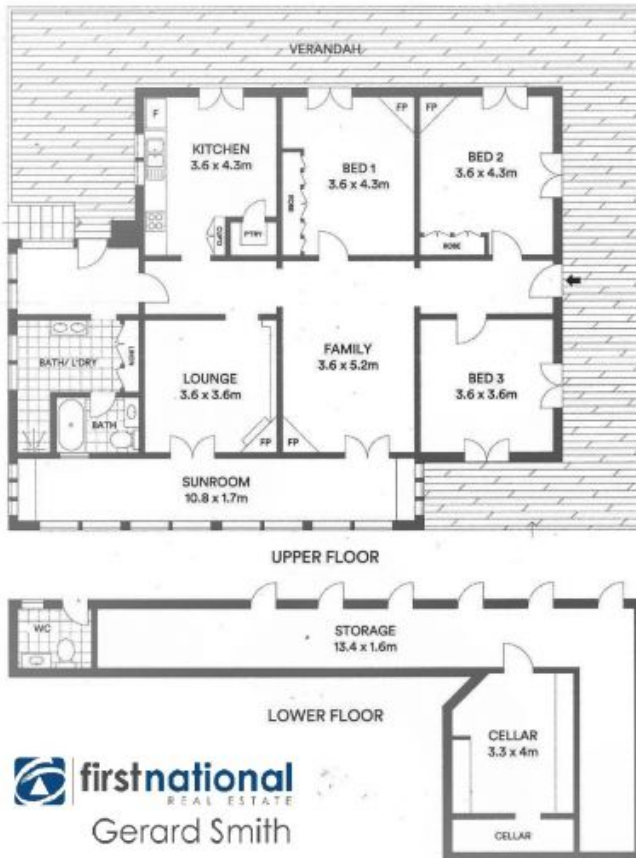
This is your chance to purchase a piece of Picton history. The fine example of late Victorian architecture is solidly constructed with double brick and local sandstone foundations and is in impeccable condition.

The beautifully crafted historic home comprises gorgeous period features including original fireplaces, polished timber floorboards, 12' Baltic pine ceilings & French doors leading to the wraparound bull-nose verandah and leadlight windows. The many classic period features combine the ambiance of a bygone era with contemporary living including new ducted air conditioning & modern Miele kitchen appliances.



Gerard Smith

Superbly located within walking distance to shops, railway, schools and the famous George IV Inn. The heritage listed Stonequarry Creek railway Viaduct is at the end of the street



40 Picton Avenue

Picton, NSW