



9 Mitchell Place Douglas Park, NSW

 4  2  2

Family Rural Living on 4047m2

SOMETHING REALLY SPECIAL ? ACT QUICKLY ON THIS ONE?

We are proud to present this European Architect designed home set against a beautiful rural backdrop.

This large family home gives you plenty of space with high raked ceilings and plenty of living options down stairs with a huge slow combustion fire place perfect for winter days. Enjoy entertaining with family and friends on your own decked covered entertaining area and swim in your own above ground fully fenced swimming pool with beautiful views and tranquil setting watching wild life go by.

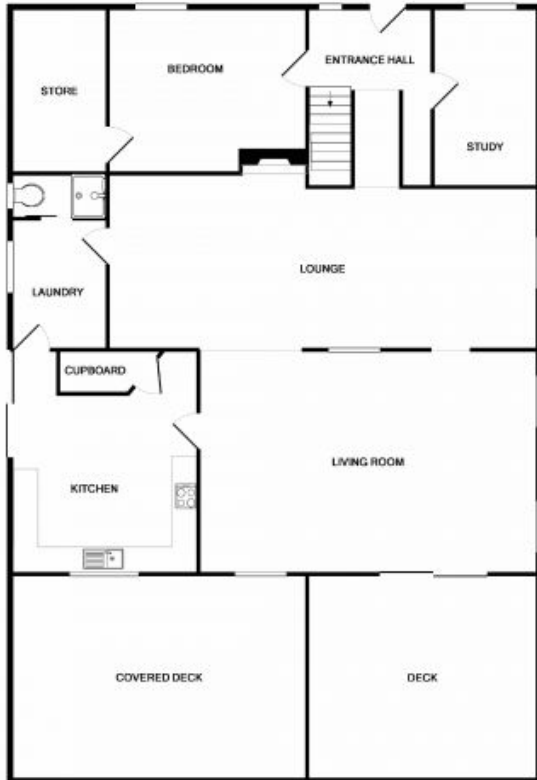
Properties of this nature are high in demand in this location.

The presentation is faultless in the sale of this well proportioned home. The rooms are large in size allowing plenty of room & space for the family.

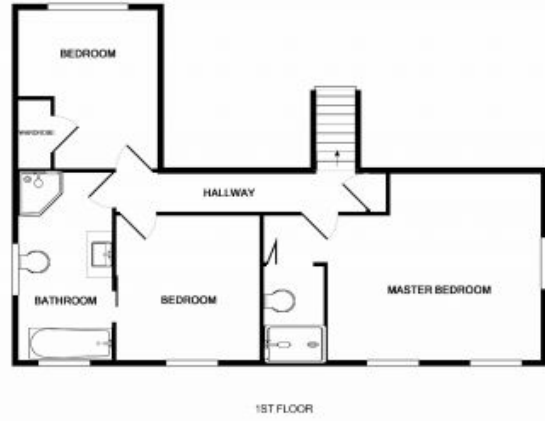
? Charming 4 bedrooms plus a large study/room, built-ins to two of the rooms, ensuite and walk-in robe off master



Gerard Smith



GROUND FLOOR



1ST FLOOR

9 Mitchell Place Douglas Park

DISCLAIMER: THIS IS FOR ILLUSTRATIVE PURPOSES ONLY. ALL DIMENSIONS ARE APPROXIMATE AND DOES NOT CONSTITUTE A LEGAL DOCUMENT