



7 Oxenbridge Avenue Wilton, NSW

 5  2.5  3

Luxury Family Living on 2041m2

Welcome to Bingara Gorge an exclusive estate where you can perfectly connect with the surrounds. With its beautiful tree-lined streets, spectacular backdrop of the Razorback Range and a modern country feel, everything you need is at your doorstep.

Set on approximately 2041m2, this immaculately presented 58 square residence is a statement in quality and contemporary design showcasing a floor plan that is defined by style and space. Boasting multiple living options of perfection and luxury, this is a property suitable for families of all ages.

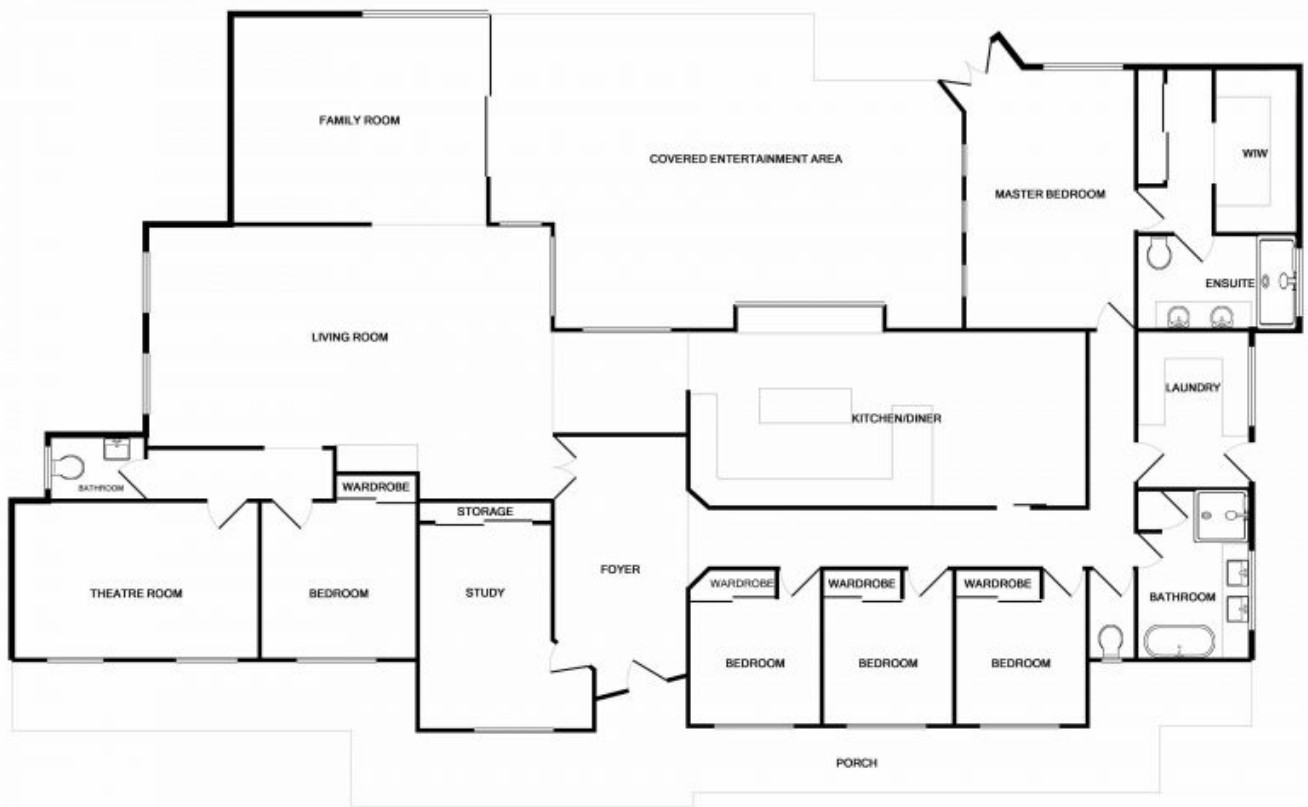
As you turn the key you will be impressed by the size and space as you are greeted by 10 ft ceilings and a wide inviting formal entry. The spacious main living and kitchen area flows out to the beautiful alfresco area overlooking the amazing water feature and landscaped gardens.

This is executive living at its finest making it a top contender on your to view list.



Trevor Ive

- Luxurious 5 bedroom plus study executive home on a level 2041m2



Made with Midas 12016

7 Oxenbridge Ave Wilton

DISCLAIMER: THIS IS FOR ILLUSTRATIVE PURPOSES ONLY. ALL DIMENSIONS ARE APPROXIMATE AND DOES NOT CONSTITUTE A LEGAL DOCUMENT

7 Oxenbridge Avenue

Wilton, NSW